



Introduction to Product
Lifecycle Management



VISUALNEXT
End2End Software Solutions

VISUALNEXT.COM | +1 888-386-4006

Company Summary

VISUALNEXT

Full legal name of the company:	Visual Next inc.
Website:	www.visualnext.com
Year business was established:	1997
Number of people currently employed:	75 (Montreal, Toronto, NY & UK)
Customers worldwide:	525+ in 10 countries
Local Partner:	ValueAura (Private) Limited
Local Partner Address:	40, Old Kesbewa Road, Nugegoda, Sri Lanka
Website:	www.valueaura.com
Contact Name:	Chamath Nandasena
Hotline:	+94 714 36 36 36
Contact Email:	info@valueaura.com

A High Performance PLM Platform for your Products

Eliminate the challenges of product development with tedious spreadsheets and manual processes. Visual PLM is a simple, powerful platform that will help streamline and automate the product lifecycle. Do away with re-keying data, document duplication errors, reduce costs and accelerate your time to market while encouraging stellar collaboration within your organization.

Visual PLM has been built specifically for the fashion industry. Based on 20 years of customer feedback and development, the software provides a canvas for your team to project their passion for quality products. Our simple, out-of-the-box integration with Adobe products allows your design team to work quickly and efficiently, while integrated Business Intelligence ensures you are making informed decisions in real-time.

All data is securely available and scalable using any browser, or on the cloud with our Microsoft Azure certification.





Smarter. Faster. Simpler. Business Data.

Use your business data to make smarter decisions and increase efficiency across all channels. Visual BI integrates point-of-sale (POS) data with pre-production and supply chain information to enable better forecasting and product development planning.

Data warehousing and OLAP cubes enable your team to generate ad hoc queries. The browser-based, drag and drop report design tool empowers users with the ability to quickly and beautifully slice, review and report on any dimension required to plan for success.

Key Features:

- Built-in Metrics for Fashion-Critical KPI's
- User-Customized Dashboards & Reports
- Financial, Operations, POS & Replenishment Analysis



Advanced Product & Color Management

Manage all development aspects of your products from a central place to collaborate quickly and easily.

Mark and share adjustments while keeping a detailed history of changes to ensure that everyone is accountable and aware.

Create linesheets, share colors, duplicate and modify products to create your collection faster. The complete Pantone Color library can be included with your Visual PLM installation to guarantee your color standards are spot on.

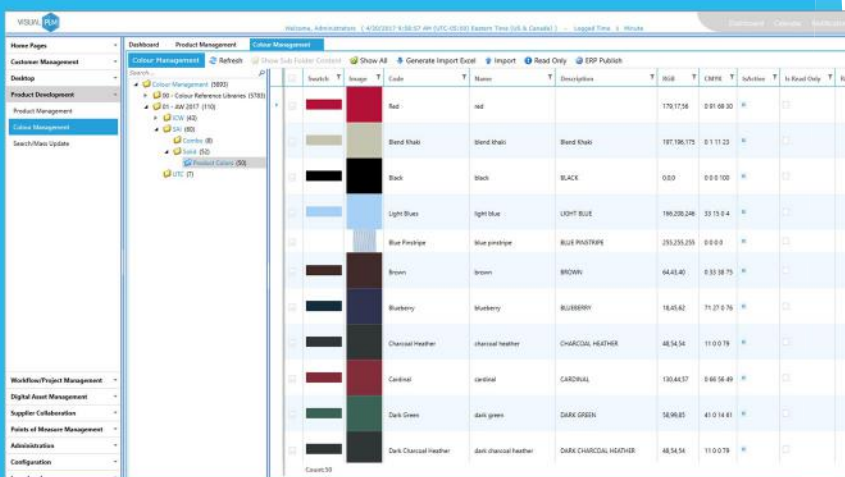
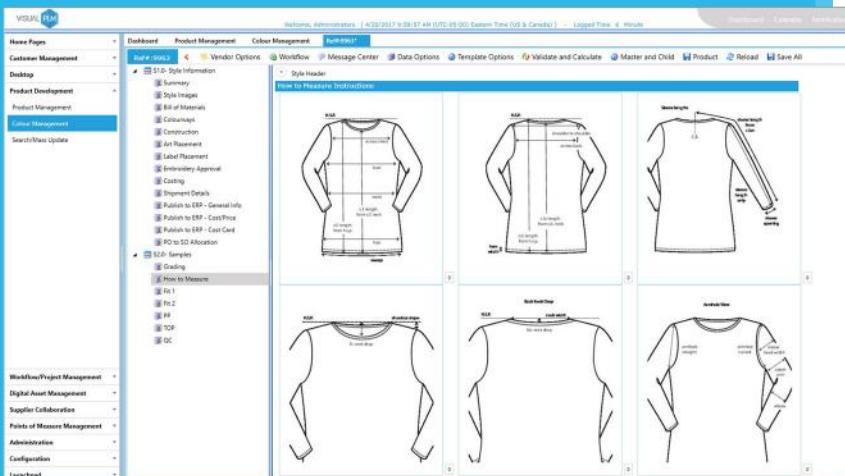
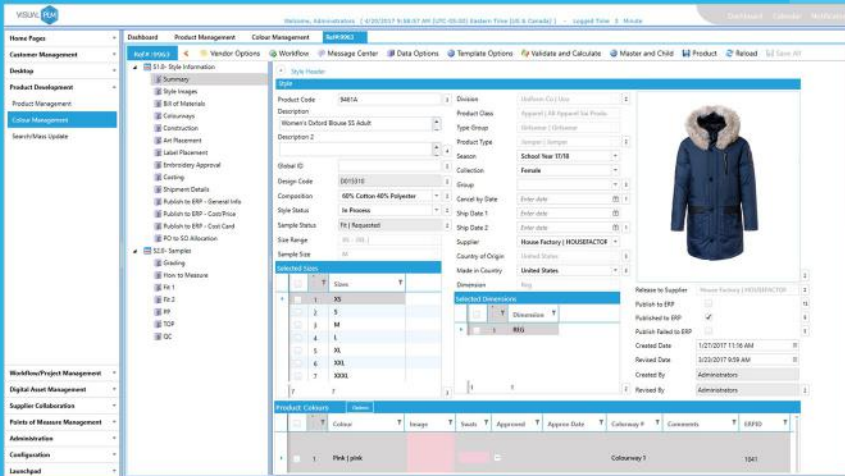
Our built-in quality control and testing features help you keep track of vendor quality and performance.

Product Management:

- Easy Copy / Paste Product Creation
- Cost Management Tools
- QC & Testing Tracking

Color Management:

- Pantone Color Library Integration Option
- Support for Other Industry Standards
- Central, Reusable Color Database
- User Defined Color Pallets



Keep Documents & Design Files in One Organized Place

Empower your team with the ability to create and collaborate quickly. Visual PLM includes full featured, secure, document and asset sharing capabilities. Keep ownership of your files and eliminate the need for third party applications like Dropbox or Google Drive.

Digital Media Files

Visual's Digital Asset Management provides the ability to manipulate and share any file type across your entire enterprise.

Beyond simple storage, the automatic version control ensures that everyone is working on the freshest version of the file.

Other Features:

- Supports Any File Type
- Secure Role & User Based Permissions
- Automatically Send Updates to Key Members
- Two-Way Adobe Illustrator Integration

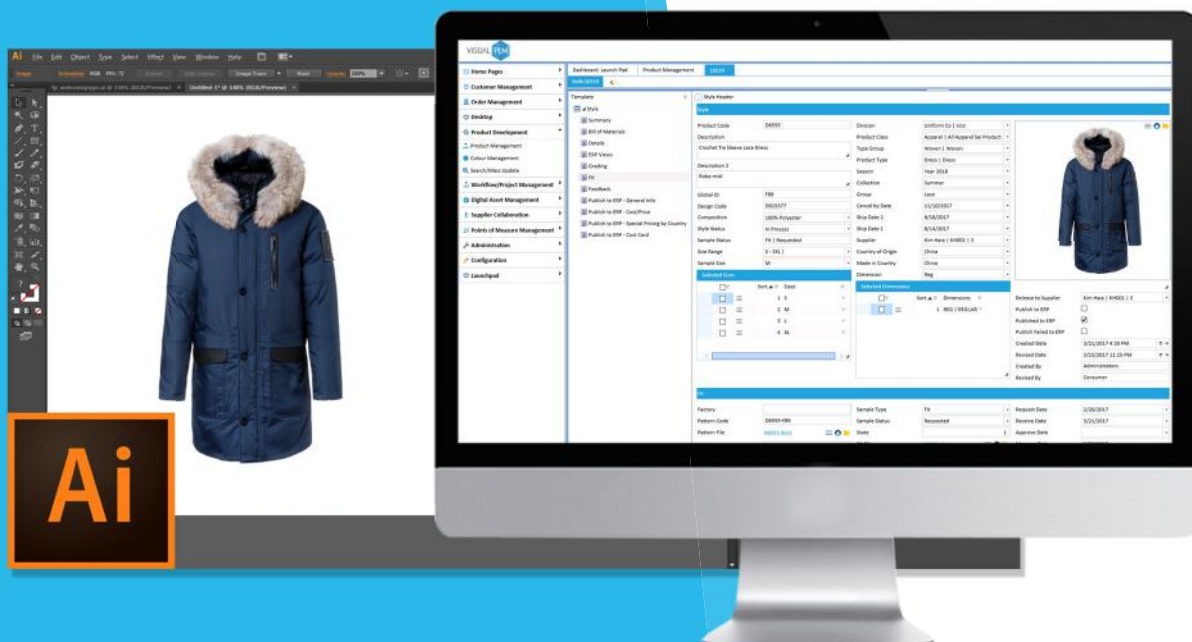
Documents & Folders

The Visual DOCM module gives team members access to all essential files and folders when and where they need them.

Simple storage for your text, image and video documents. Go green and digitize your paper files using the built in OCR scanning tools.

Other Features:

- Drag & Drop Interface
- Comprehensive Search Ability
- One-Click Print & E-mail Options
- Multi Language Support



Your Work, Where & When You Need It

Mobility is essential in a modern product development solution.

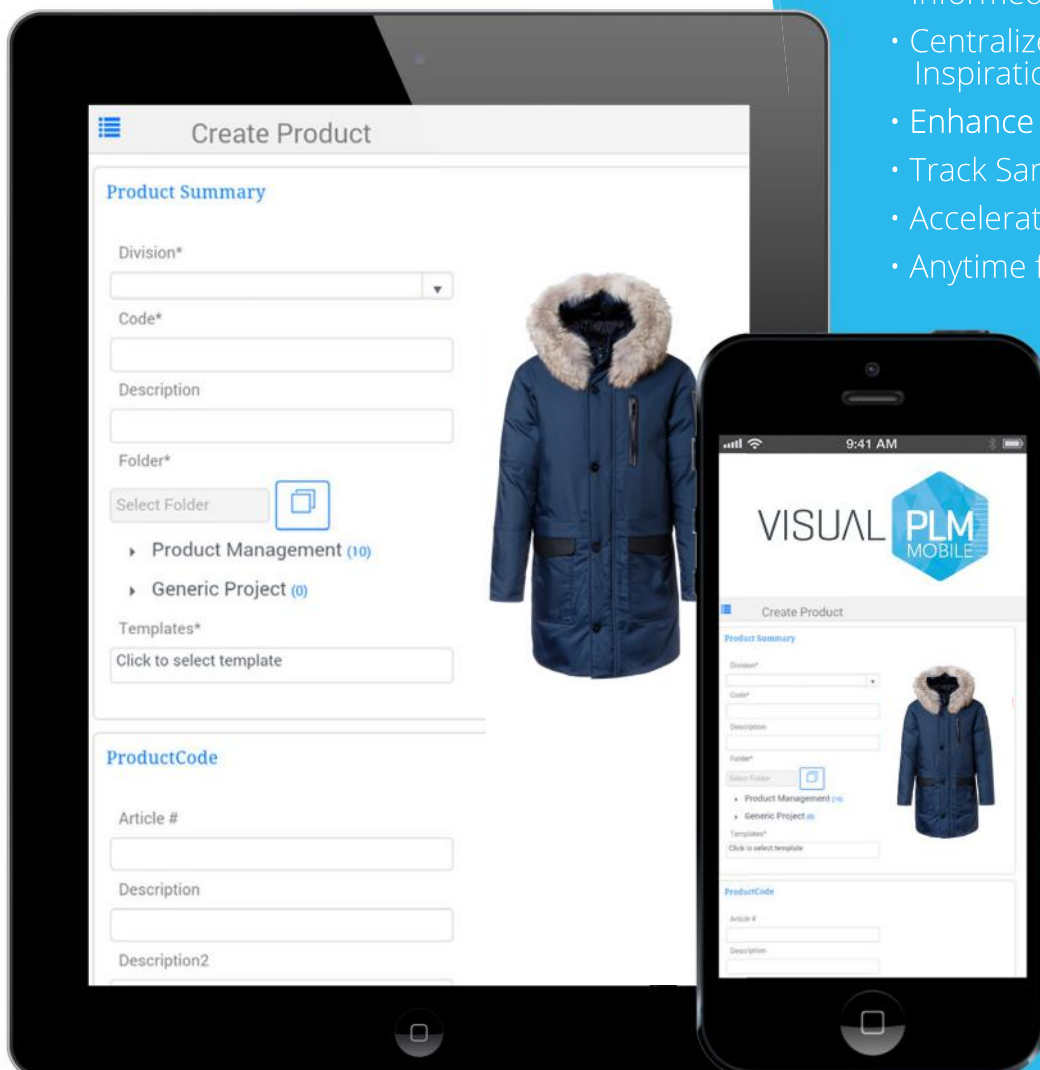
Get your great designs into development faster with Visual PLM mobile. Connect multiple development teams in a collaborative environment, in real time.

Users can snap inspirational photos, make notes and create conceptual products right from their phone or tablet.

Create, View & Manage Your Products From Anywhere

Responsive PLM is fully mobile:

- Enable More Timely and Better Informed Decisions
- Centralize Product Ideas and Inspiration
- Enhance Creativity and Flexibility
- Track Samples and Prototypes
- Accelerate Speed to Market
- Anytime from anywhere



Our Clients are Top Innovators

Our customers, Mountain Equipment Co-op, and Hatley were featured in Apparel Magazine's Top Innovators issue.

We proudly help our customers raise the bar in all their business processes, everyday.



"The co-op can streamline all product and material specifications, as everything about a style is now recorded in one place. Anyone in the organization who needs information can access the portion they need within PLM. The solution is clearly working its magic."



"Using the End2End platform, Hatley established subsidiary companies in Australia, United Kingdom, and the United States without setting up multiple warehouses, affording a competitive advantage over similar enterprises that rely on a distributed warehouse model rather than a centralized one."

Trusted by These Brands & More



JIGSAW

MEC

TOKYO
LAUNDRY



Dex®

LISETTE |[®]
MONTRÉAL



Our Vision

Visual Next is a Montreal based software development company specializing in Apparel Specific Enterprise Management Software. Visual Next was founded in the 1990s by business professionals with deep roots in the apparel industry. The software was built on the principle of foresight; allowing users to visualize their fashion business processes in a unique and intuitive way by removing the element of uncertainty in a shifting market.

Visual Next is now the leading provider of Apparel ERP & PLM Software in North America with distribution channels in Toronto, New York, Los Angeles, South America, UK, Continental Europe, Australia and China. We confidently provide complete End2End solutions to over 500 clients who have all seen their business in a new light.

Take It From Our Customers

"We have grown exponentially in the past two years and Visual Next has been able to meet the challenges of our ever-changing needs."

DELIA DE GASPERIS - Lisette L

Strategic Partnership



Visual PLM is built on Microsoft products to ensure the highest levels of stability and application security. Mac users? No problem. All of our software works exactly the same on all computers.



Our PLM software exceeds the Microsoft standards for building and deploying cloud based applications. Feel comfortable knowing that your data is properly secured in the cloud.



Go beyond PLM and manage your entire enterprise. Visual End2End combines all the tools and information fashion companies need to succeed in a single packaged, out-of-the-box business solution.

With world-class interoperability, the End2End platform extends PLM to serve as the single source of product development, production, distribution, data analytics and other critical business information that has traditionally been restricted to several independent systems.

Empower your teams to make better business decisions faster and drive sustainable competitive advantages.

Visual End2End Includes:



Product Lifecycle Management

The most comprehensive and collaborative product development environment on the market.



Digital Asset Management

Centralize production files and other essential assets. Complete security and version control.



Enterprise Resource Planning

A fully integrated and modular ERP system. Auditable accounting EDI & Omnichannel ready.



Document Management

Secure, multi-lingual file sharing with one click printing. Scan & store paper documents with built in OCR.



Ecommerce

Create and maintain B2B & B2C websites from within Visual. Magento and Shopify compatible.



Supply Chain Management

True transparency. Optimize your supply chain with smarter container loading and order consolidation.



Sales force Automation

Streamline your order entry. Allow sales agents and customers to enter orders directly.



Warehouse Management

Go paperless! Pick and pack orders smarter, maintain an accurate inventory and lower your hardware costs.



Business Intelligence

Make strategic business decisions. View and analyze all your business data in one place.



Point Of Sale

Cloud connected wholesale & retail POS. Multi-lingual, easy loyalty discounts and real-time reporting.



Talk to a
Specialist Today!

VISUALNEXT

End2End Software Solutions

VISUALNEXT



ValueAura (Private) Limited

40, Old Kesbewa Road, Nugegoda, Sri Lanka

www.valueaura.com

Chamath Nandasena

+94 714 36 36 36

info@valueaura.com